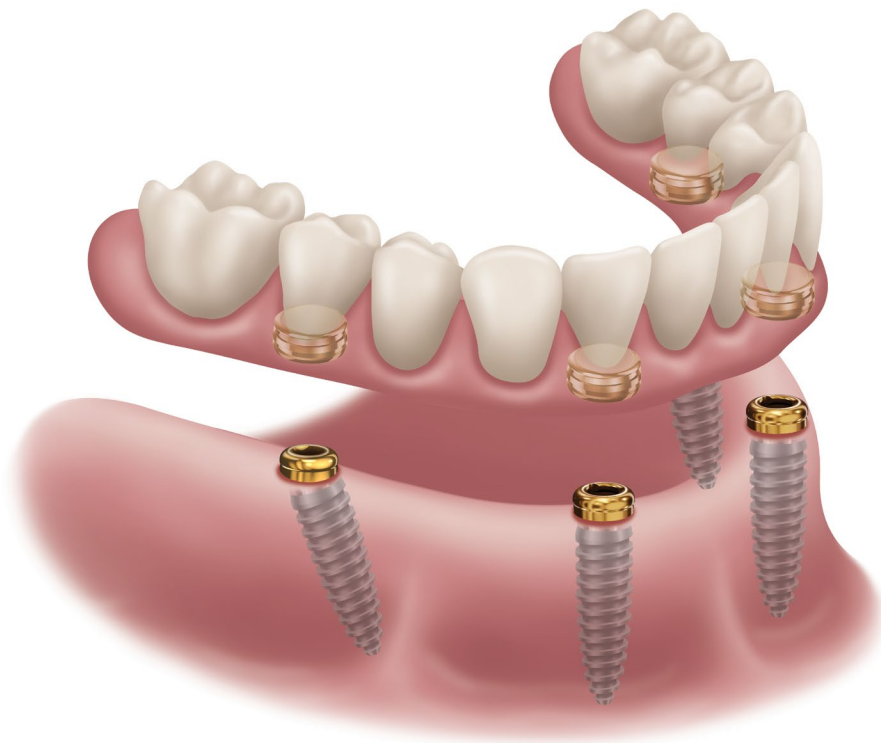




# LOCATOR®



## **LOCATOR® ANGLED ABUTMENT**

TECHNIQUE MANUAL

# TABLE OF CONTENTS

---

THE LOCATOR® ANGLED COMPONENT REFERENCE LIST .....	3
LOCATOR®-THE GOLD STANDARD ATTACHMENT SYSTEM.....	4
LOCATOR®- A FAMILY OF SOLUTIONS.....	5
LOCATOR® ENHANCED CORE TOOL .....	6
PLACING THE LOCATOR® ANGLED ABUTMENT ATTACHMENT SYSTEM .....	7
REMOVAL OF THE LOCATOR® ANGLED ABUTMENT SYSTEM.....	10
RESTORATION INSERTION, REMOVAL AND CLEANING GUIDELINES.....	14
RETURN POLICY AND WARRANTY.....	15

**PLEASE NOTE:** This document is designed to serve as a guide for dental clinicians using Zest Dental Solutions® Products. It is not intended to be a substitute for professional training and experience. Please refer to the Instructions For Use for further information.

# THE LOCATOR® ANGLED COMPONENT REFERENCE LIST

## LOCATOR ANGLED ABUTMENTS

### IMPLANT ABUTMENTS

2.5mm cuff lateral  
02398A-SB



3.5mm cuff lateral  
02399A-SB



4.5mm cuff lateral  
02400A-SB



5.5mm cuff lateral  
02401A-SB



6.5mm cuff lateral  
02402A-SB



7.5mm cuff lateral  
02403A-SB



### LAB PROCESSING

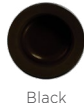
Impression Coping  
08505



Abutment Analog  
08530 4mm  
08516 5mm



Black Processing Male  
08515



Block-Out Spacer  
08514



Processing Spacer  
08569



Parallel Post  
08517



LOCATOR Removable Housing  
08510



LOCATOR FIXED Housing  
09508



### REPLACEMENT MALES

#### LOCATOR FIXED INSERTS

4 Implant Insert  
09501



Anterior/Posterior Insert  
09506



Mid Arch Insert  
09507



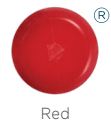
#### LOCATOR REMOVABLE INSERTS

(ANGLED LOCATOR ABUTMENTS ARE ONLY COMPATIBLE WITH EXTENDED RANGE REMOVABLE INSERTS)

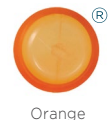
Zero Retention Male  
08558



Extra Light Retention Male  
08548



Light Retention Male  
08915



Regular Retention Male  
08547



### TOOLING

LOCATOR Enhanced Core Tool  
08340



Driver for Angled Abutments  
02405



NOTE: Driver comes with Short and Long Driver Insert

Abutment Removal Tool  
02412



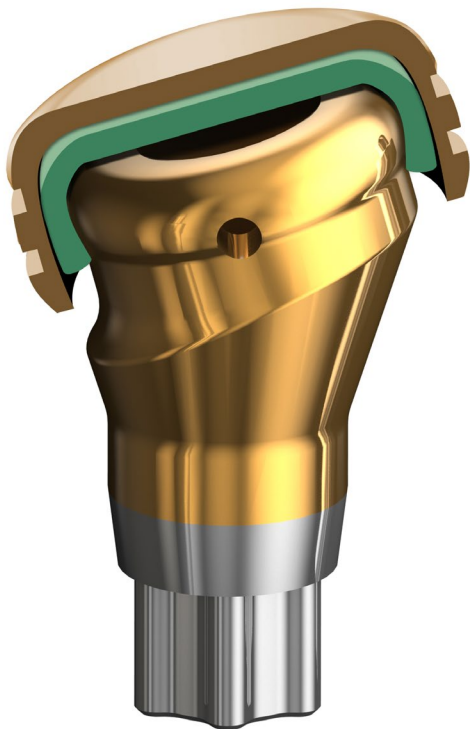
# LOCATOR® - THE GOLD STANDARD ATTACHMENT SYSTEM

## THE BEST JUST GOT BETTER

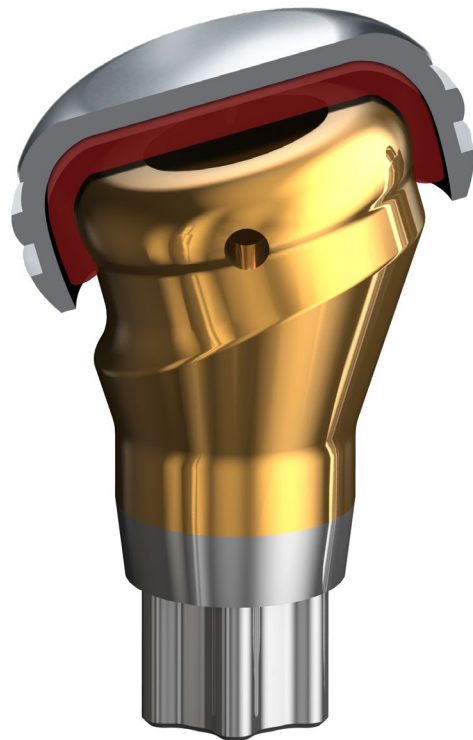
For 40 years, Zest Dental Solutions® has been a global leader in the design, development, manufacturing and distribution of dental solutions for edentulous patients. The company pioneered pivoting, self-aligning attachments that substantially reduced the damage caused by the improper seating of overdentures. Zest Dental Solutions is located in Carlsbad, California with global distribution through implant companies, distributor networks, and its own domestic retail sales operation.

Today, Zest's flagship product, LOCATOR, is recognized as an industry wide solution for implant-retained, tissue supported removable overdentures and for implant supported FIXED prostheses with LOCATOR FIXED. Over the years, Zest has continued to improve and innovate the options for edentulous patients. Today, the LOCATOR abutment that clinicians all around the world have come to know and trust can now be used for removable OR fixed patient solutions with increased angle correction.

The new Angled LOCATOR abutment can correct divergence of 15 degrees, in addition of the 20 degrees of correction with the use of extended range inserts.

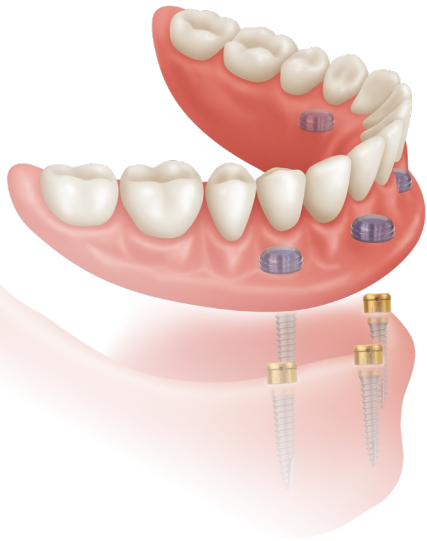


ANGLED ABUTMENT WITH  
LOCATOR FIXED HOUSING  
AND INSERT



ANGLED ABUTMENT WITH  
LOCATOR REMOVABLE  
HOUSING AND INSERT

# LOCATOR® - A FAMILY OF SOLUTIONS



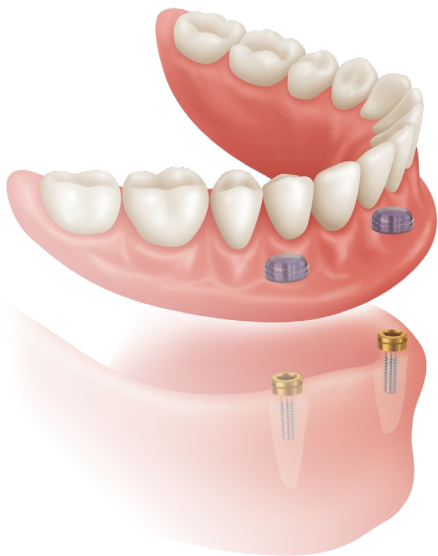
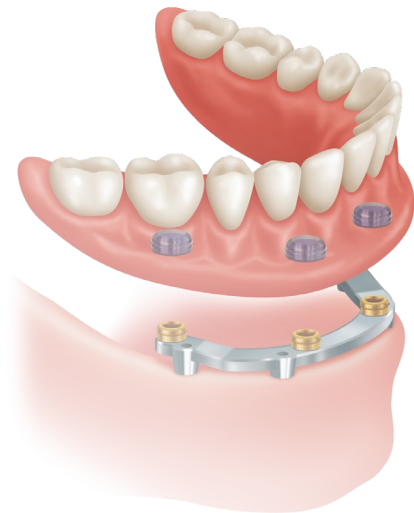
## IMPLANT ATTACHMENT

The LOCATOR Attachment with patented pivoting technology is the premier system for implant-retained overdentures and now FIXED prostheses. According to recent studies, a two implant-retained, tissue-supported overdenture restoration is considered the new minimum standard of care for edentulous patients. More than two implants may also be placed for more stability and improved patient satisfaction.

LOCATOR attachments are now available in preangled designs offering even more flexibility in case planning and implant placement.

## BAR ATTACHMENT

When a case calls for an overdenture bar, the LOCATOR Bar Attachment provides the same pivoting technology, self-aligning feature, superb retention, and exceptional durability, all in a low-profile design. It also offers three options for the fabrication of a resilient attachment on an implant-supported cast alloy or milled titanium bar.

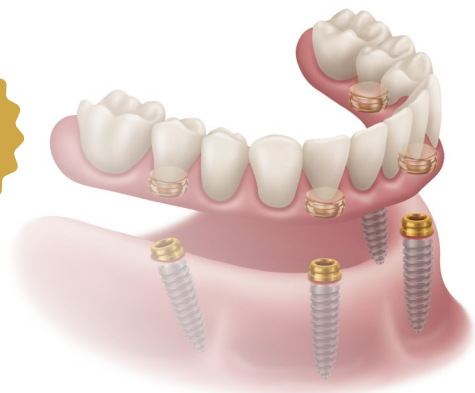


## ROOT ATTACHMENT

In clinical situations where healthy tooth roots can be prepared for placement of attachments to retain an overdenture, the LOCATOR Root Attachment delivers great versatility. Its supra-radicular design gives you the choice of a straight post, 10° and 20° angles to accommodate divergent roots, as well as a special cast-to version.

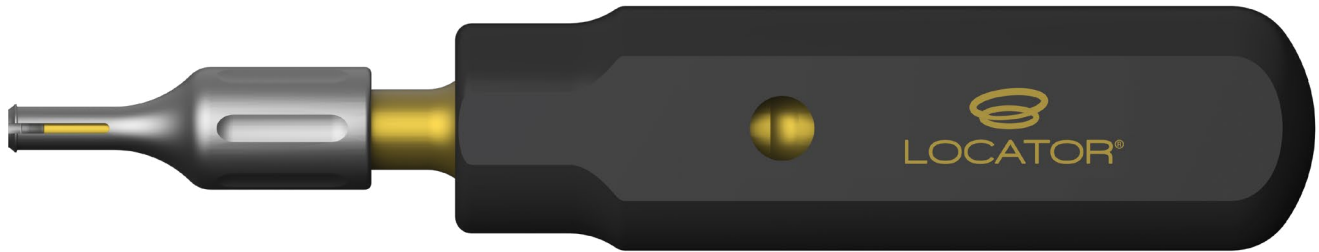
## LOCATOR FIXED

The first abutment that can be used for removable or fixed solutions with only the change of an insert! LOCATOR FIXED offers patients an affordable path to a fixed solution, while offering clinicians a familiar workflow and product they already know and trust.



# LOCATOR® ENHANCED CORE TOOL

---

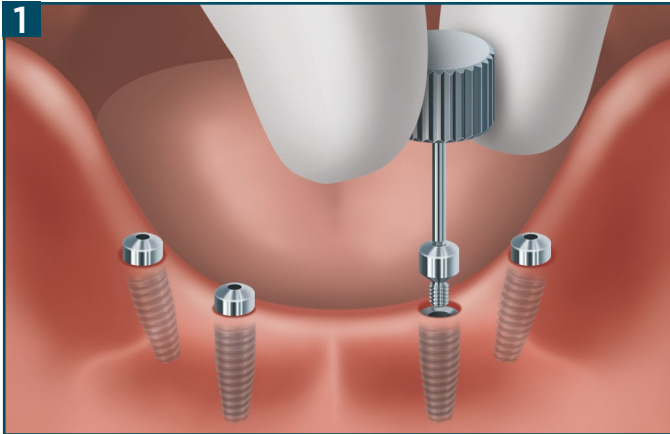


## ENHANCED CORE TOOL FOR LOCATOR AND LOCATOR FIXED

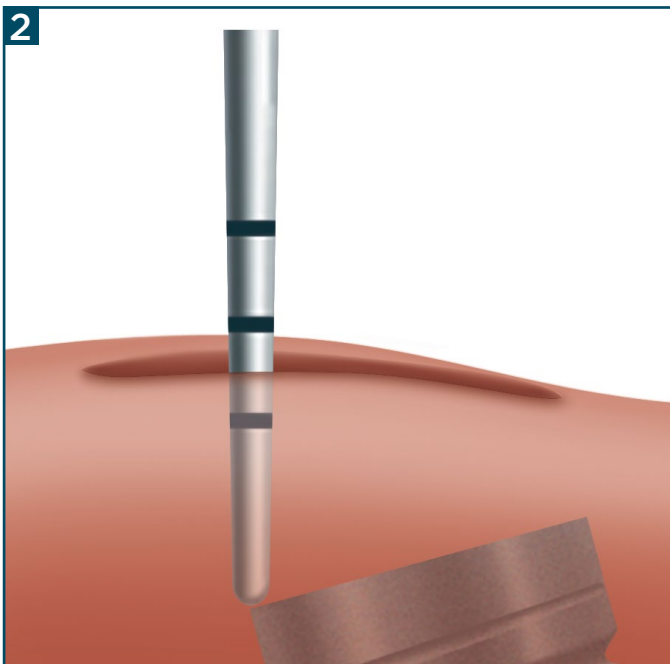
- One streamlined tool compatible with LOCATOR Removable and LOCATOR FIXED Inserts
- Two-sided instrument designed for easy insertion and removal of any LOCATOR Insert
  - **Insertion Tip:** Effortlessly pickup inserts for transfer and placement in housing
  - **Removal Tip:** Place tip with closed prongs into insert, twist collet to open prongs, tilt core tool and easily remove LOCATOR Insert

# LOCATOR® ANGLED ABUTMENT ATTACHMENT SYSTEM

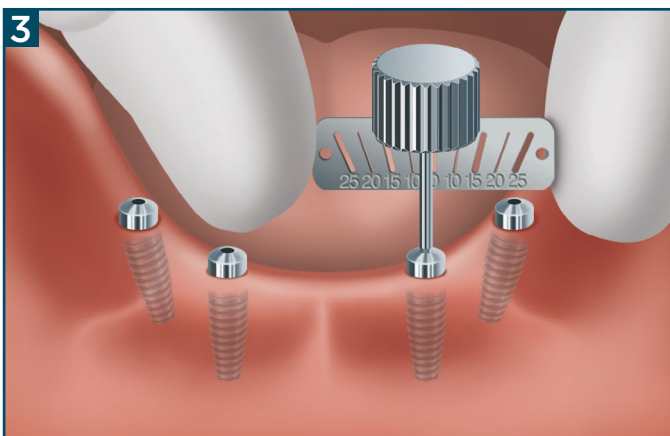
## PLACING LOCATOR ANGLED ABUTMENTS



**1** Identify the system and diameter of each implant. Remove the healing abutments.



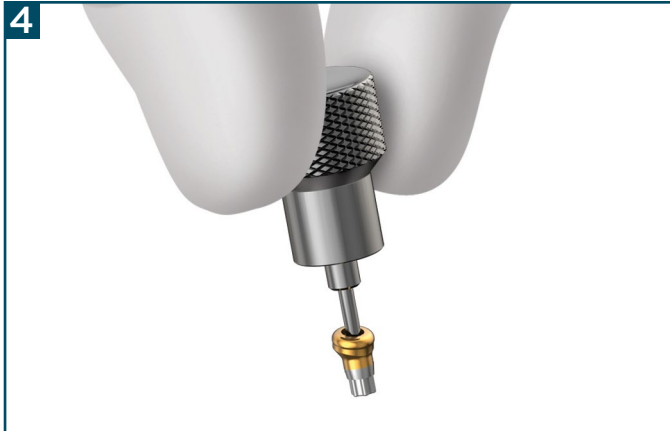
**2** Using a periodontal probe, measure the height of the gingiva at the highest point and select the cuff height of the Angled LOCATOR Abutment that corresponds to that measurement. If it is 2.5mm, choose a 2.5mm cuff height. An additional 1.5mm of Abutment height will extend above the gingiva to accommodate for the Denture Housing.



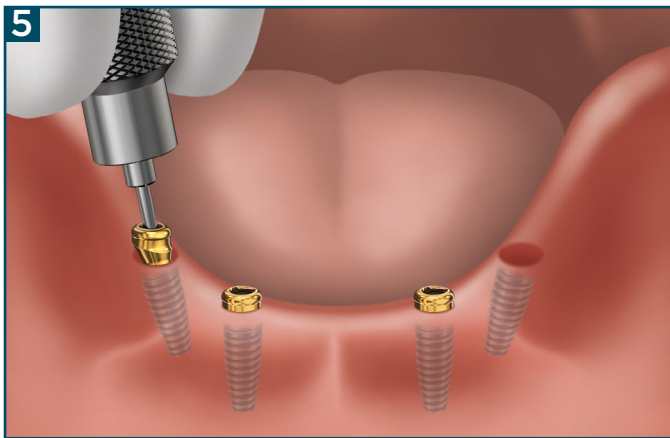
**3** Use the Angle Measurement Guide to determine the angulation of each implant. LOCATOR Angled abutments correct 15° of implant angulation. The Extended Range Inserts can correct up to an additional 20° of divergence.

**NOTE:** LOCATOR Angled Abutments are only compatible with LOCATOR FIXED and LOCATOR Removable Extended Range Inserts.

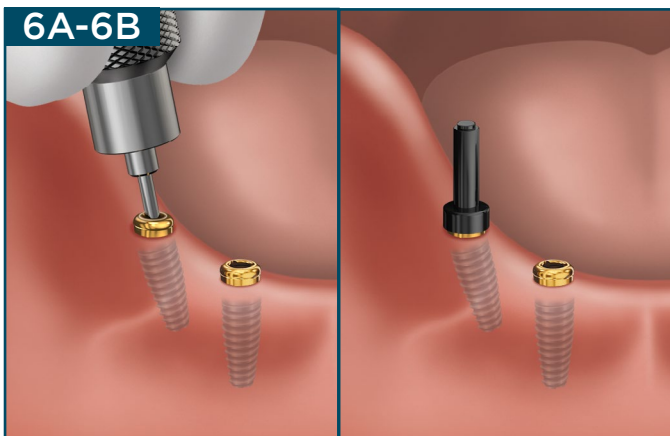
# LOCATOR® ANGLED ABUTMENT ATTACHMENT SYSTEM



**4** Using the abutment driver and thumb knob, insert and press the driver firmly into the abutment screw until the abutment is captured onto the driver.



**5** Transfer the abutment to the implant site and insert the abutment into the implant at the desired abutment orientation.

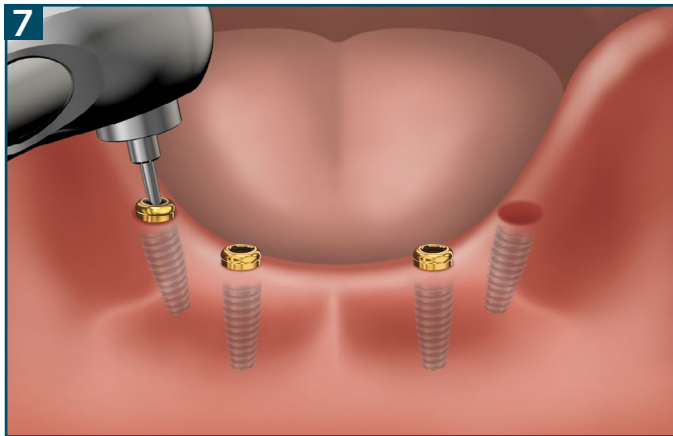


**6A-6B** Preliminarily hand tighten the abutment into place. Confirm that the desired abutment orientation is obtained visually using the provided parallel post.

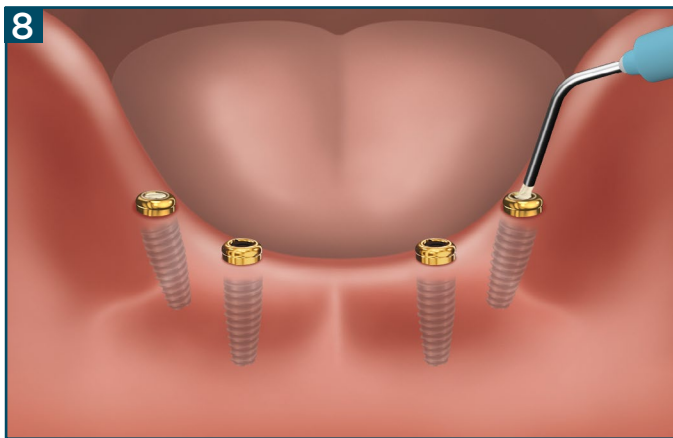
**NOTE:** If the abutment orientation needs to be adjusted, reposition the abutment into the desired abutment orientation prior to tightening the screw.



# LOCATOR® ANGLED ABUTMENT ATTACHMENT SYSTEM

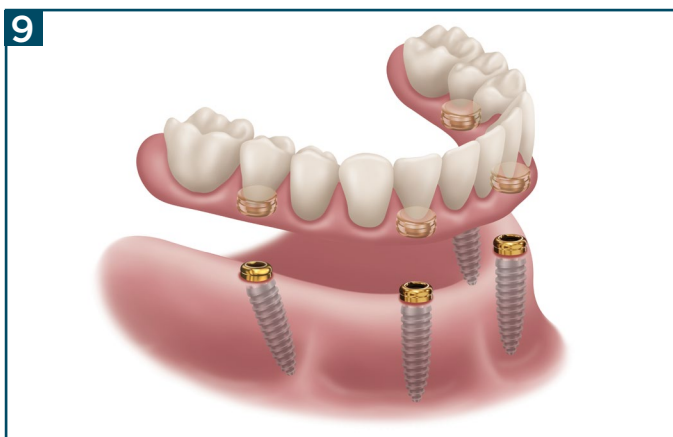


**7** Using the torque wrench and the angled abutment driver, tighten the angled abutment to 30 Ncm or to the torque for an abutment screw recommended by the manufacturer of the implant/abutment system. Use of higher torque values than recommended above could cause a fracture of the angled abutment or screw.



**8** Seal top of abutment with cotton pellets or Teflon covering the internal screw followed by a bulk-filled composite such as Bulk-EZ Plus® or material of choice. For optimal performance, do not overfill past the top of the abutment.

**NOTE:** This step is not necessary for straight LOCATOR Abutments.

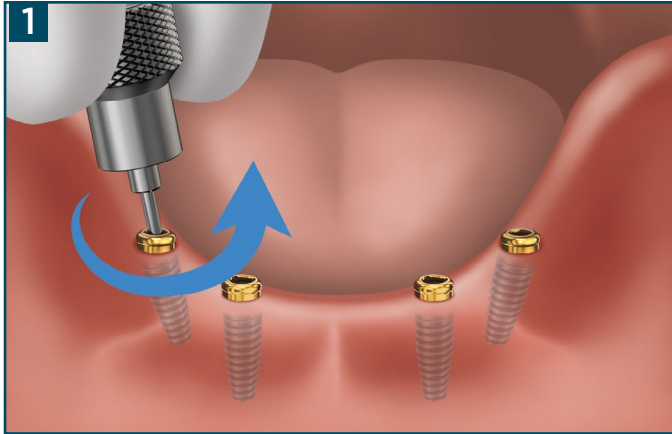


**9** Refer to the LOCATOR abutment manual (L8030-TM) for restorative techniques. LOCATOR Angled abutments use standard LOCATOR protocols for pickups.

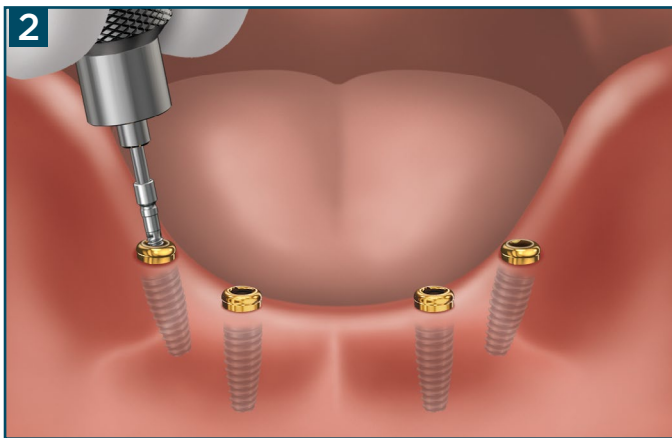
**NOTE:** LOCATOR Angled Abutments are only compatible with LOCATOR FIXED and LOCATOR Removable Extended Range Inserts. LOCATOR Removable Standard Range inserts are not compatible with Angled Abutments.

# LOCATOR® ANGLED ABUTMENT ATTACHMENT SYSTEM

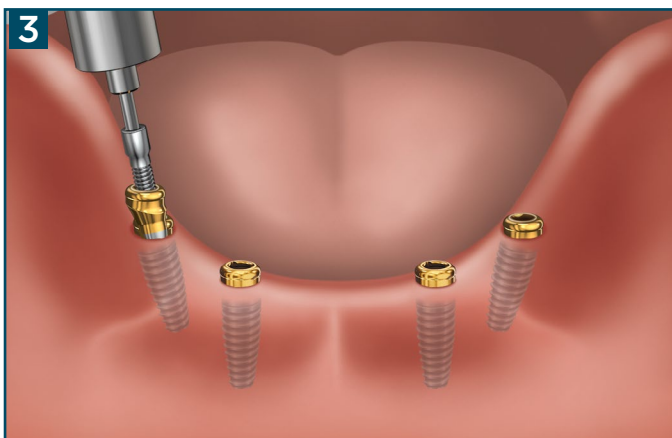
## REMOVAL OF THE LOCATOR ANGLED ABUTMENT



**1** To remove the abutment from the implant, begin by carefully removing any material sealing top of the abutment using manual instruments such as a curette or a dental handpiece with a bur such as a #330 or small round, avoiding contact with the abutment walls or internal screw. Next insert and press the driver firmly into the abutment screw using the thumb knob. Apply a counterclockwise torque on the screw until the abutment screw is no longer engaged with the implant. At this point, you may be able to remove the abutment from the implant by hand. If you cannot remove the abutment move to the next step.



**2** If you are unable to remove the abutment from the implant, remove the abutment screw from the abutment by doing the following. Insert and press the driver firmly into the abutment screw using the thumb knob. Pull up on the abutment driver and thumb knob and continue to apply a counterclockwise torque until the abutment screw is fully removed from the implant and abutment.



**3** With the abutment screw removed, attach the Abutment Removal Tool to the Angled Abutment driver and insert into the abutment until the Abutment Removal Tool bottoms out. Apply a clockwise torque to the Abutment Removal Tool until the abutment disengages from the implant. By holding the abutment removal tool, remove the abutment from the implant.







# RESTORATION INSERTION, REMOVAL AND CLEANING GUIDELINES FOR THE CLINICIAN AND PATIENT

To maintain the LOCATOR® Abutments and fixed or removable restorations, it is critical that clinicians and patients perform routine maintenance. Inspect abutment for wear at each hygiene appointment, replace if gold surface is wearing away. A worn abutment may affect the retention and fit of the insert to the abutment.

It is also important that patients understand the proper hygiene routines that should be performed at home. Zest recommends the Regal Hygiene Solutions system. This is a 2-step solution that is used in office and at home. Find out more at [www.zestdent.com](http://www.zestdent.com).

Refer to the LOCATOR FIXED manual for recommendations for maintaining FIXED restorations with LOCATOR Abutments. Refer to the LOCATOR Removable Technique Manual for recommendations for maintaining removable restorations with LOCATOR Abutments.

## ADDITIONAL NOTES OF CAUTION

Failure of the patient to follow oral hygiene protocols and appropriately care for the restoration may also result in inflamed tissue around the implant, leading to the development of peri-implantitis. Throughout time, peri-implantitis may cause the implant to become mobile and fail. Please ask patients to consider the following when caring for their restorations:

Avoid using abrasive toothpaste to clean the restoration. The coarse particles in the toothpaste may scratch the surfaces of the restoration, enhancing the potential for plaque accumulation.

Oral rinse such as Listerine® mouthwash can be used safely without any negative effect on the Abutments or Replacement Insert.

# RETURN POLICY AND WARRANTY

## ORDERING

Orders are accepted by internet, email, mail, fax, or phone. Regular business hours are 5:00am to 5:00pm PST (Pacific Standard Time). Domestic orders received by 1:00pm PST can be shipped by ground the same day. Orders received by 3:00pm PST can be shipped by express. Institutional orders require a purchase order number.

## PRICING

Zest Dental Solutions® makes every effort to maintain a competitive pricing structure. Pricing is subject to routine review and change without prior notice. All prices listed are in U.S. dollars.

## TERMS AND BILLING

**A. Credit Card:** Payment at the time of order with VISA, AMERICAN EXPRESS, DISCOVER or MASTERCARD is necessary for customers not approved for open account billing or special financing offers.

**B. C.O.D.:** Delivery can also be made by C.O.D. freight collect.

**C. Open Account:** An open account can be established by completing a credit application and receiving approval by Zest Dental Solutions. The terms of orders purchased under open accounts are net 30 days.

**D. Export Orders:** Individual orders shipped outside the U.S. require payment in advance or a letter of credit.

**E. Past Due Accounts:** Past due balances will be subject to a 1.5% finance charge per month, amount equal to 18% per annum.

## SHIPPING CHARGES

Merchandise is shipped prepaid by Zest Dental Solutions with the cost added to the invoice, or freight collect with C.O.D. fee included in the case of C.O.D. shipments. Delivery options include Fed Ex ground, 3-day, 2-day, or overnight rush service.

## LIMITED WARRANTY

Zest Dental Solutions provides a limited warranty for its products, to the original purchaser, to be free from defects in workmanship and materials under normal use and service, for a period of one year from the date of purchase, with the exception of LOCATOR and

LOCATOR R-Tx abutments which carry a 4 year limited warranty when purchased directly from Zest Dental Solutions, and a 2 year limited warranty when purchased from one of our partners.

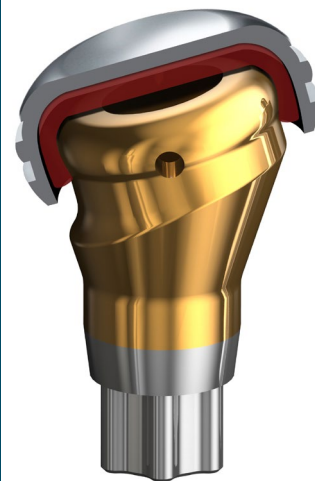
Zest Dental Solutions will, at its option, substitute the returned product that proves defective within the warranty period, with a similar product, free of charge. Zest Dental Solutions continually strives to improve its products, and therefore, reserves the right to improve, modify, or discontinue products at any time without notice or incurring obligations. Purchaser assumes all risks and liability resulting from the use of Zest Dental Solutions Products, whether used separately or in combination with other products not of Zest Dental Solutions manufacture.

## RETURN POLICY

Please Observe the Following Guidelines:

- A.** Authorization for returns must be received from Zest Dental Solutions prior to the return of any product. A Return Material Authorization (RMA) number will be provided for all returns.
- B.** Shipping charges must be prepaid by the customer to accept a return shipment.
- C.** Returned products are subject to a \$20 restocking fee for orders under \$400. For orders \$400 to \$1,000, a \$40 restocking fee will be applied. For orders exceeding \$1,000, please contact your Customer Service Representative for the restocking fee.
- D.** Returned merchandise will be accepted within 90 days of purchase if product is in saleable condition (in its original unopened package and not marred by any added writing or over-labeling).
- E.** Returns will not be accepted after 90 days of purchase.
- F.** Non-returnable items include:
  - 1. Merchandise retained beyond expiration date noted on the package.
  - 2. Packages with broken seals or missing parts
  - 3. Used, damaged, or obsolete products will not be accepted for return.
- G.** Order discrepancies must be reported within 30 days of invoice date.

VISIT OUR WEBSITE AT  
**WWW.ZESTDENT.COM**  
TO PLACE ORDERS ONLINE  
24 HOURS A DAY 7 DAYS A WEEK



**ZEST DENTAL SOLUTIONS**  
2875 LOKER AVENUE EAST  
CARLSBAD, CA 92010  
USA

TEL: 1.855.866.LODI (5934)  
FAX: 760.743.7975  
EMAIL: SALES@ZESTDENT.COM  
**WWW.ZESTDENT.COM**