



MAKE IT A LOCATOR LIFE

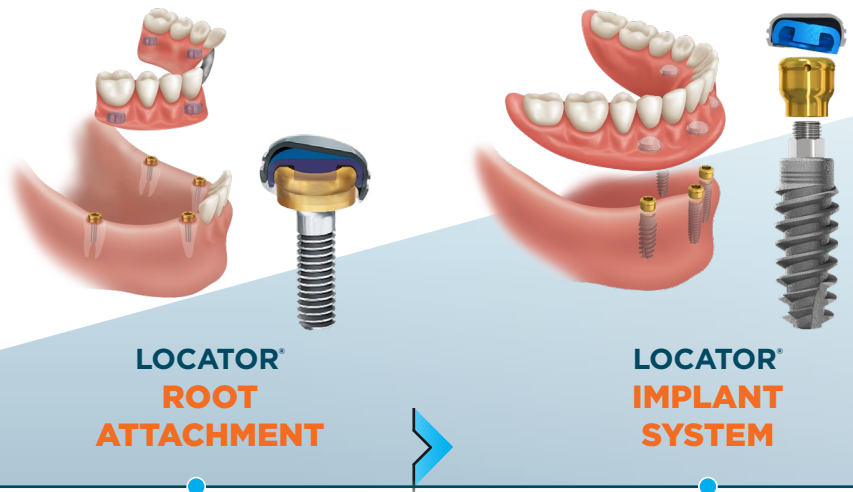
FROM PARTIAL TO FULL EDENTULISM, YOUR PATIENTS CAN

LIVE WITH CONFIDENCE
FROM REMOVABLE TO **FIXED**

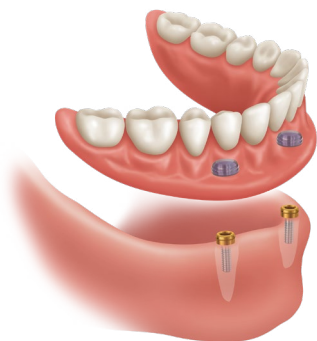
ZD ZEST DENTAL
SOLUTIONS®

FROM **REMOVABLE** TO **FIXED** FULL-ARCH SOLUTIONS

With nearly 5 million patients treated, the Zest LOCATOR® system is the market leader in removable and FIXED solutions for the entire patient journey, from **partially** to **fully edentulous**.

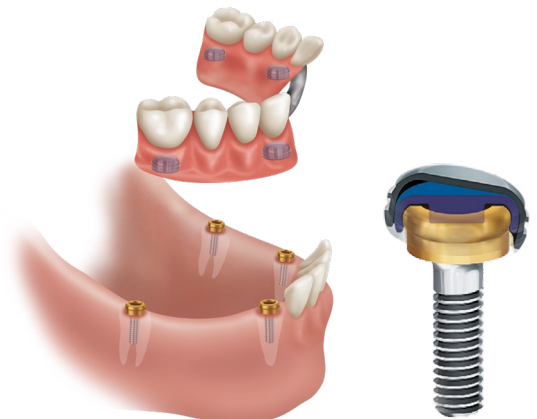


PARTIALLY **EDENTULOUS** **SOLUTIONS**



LOCATOR **ROOT ATTACHMENT**

The gentle and easily navigable transition to dental implants.



Comfort and a secure fit are the keys to overdenture and removable partial denture success for partial or fully edentulous patients. The LOCATOR Root attachment provides customizable retention, better stability and improved aesthetics, while helping preserve the health of a patient's remaining teeth and bone.

PROVIDING A HIGHER QUALITY OF LIFE AT EVERY STAGE OF THE TREATMENT CYCLE

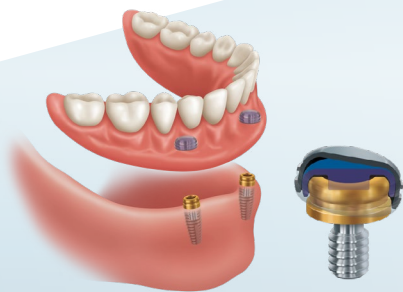
4.7 MILLION PATIENTS
TREATED

280 DIRECT IMPLANT
CONNECTIONS

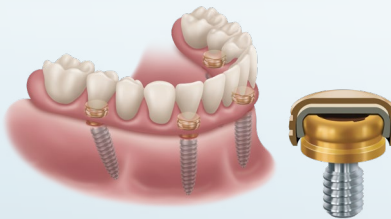
100 COMPATIBLE
IMPLANT PARTNERS

Zest LOCATOR systems offer:

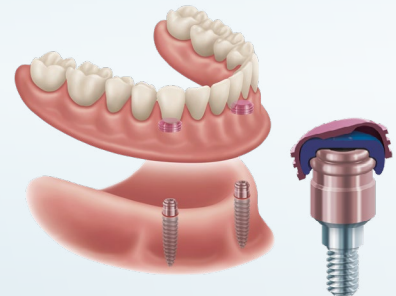
- Removable & FIXED solutions using LOCATOR abutments and workflow
- Advanced abutment technology that is designed to protect the implant, abutment and inserts for optimum performance
- An easier transition for patients to move forward with overdentures, a fixed prosthesis, or implant therapy
- Better outcomes and greater satisfaction
- A lifelong relationship between patients and practices



**LOCATOR®
REMOVABLE
ATTACHMENT SYSTEM**



**LOCATOR®
FIXED
ATTACHMENT SYSTEM**



**LOCATOR®
R-Tx REMOVABLE
ATTACHMENT SYSTEM**

EDENTULOUS



Angled posts accommodate
divergent roots

- Leverages the natural tooth root for retention of overdentures or removable partials
- Provides immediate retention while implants integrate – patients enjoy the confidence and benefits sooner
- Helps deter bone loss and maintain facial structure
- Superior stabilization for removable partials – improves aesthetics, retention and preserves remaining teeth
- Offers 0°, 10° and 20° post flexibility for divergent roots
- Enables the conversation on the importance of implant-retained overdentures before the development of full edentulism



Dr. Xavier E. Saab, DDS, MS

Patients with retained roots taking advantage of Locator Root abutments have a lot more solid retention and stability than traditional dentures. Utilizing a metal framework to provide additional strength and keep the denture lighter in conjunction with the three Locator Root attachments, we were able to remove the majority of the palate and still give the patient superior retention, stability, aesthetics, and functionality.



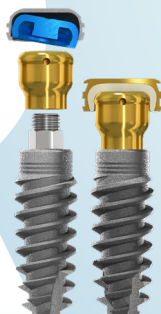
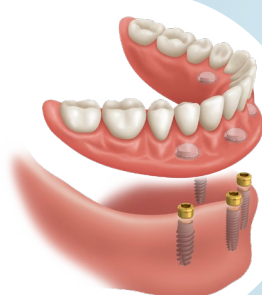


EDENTULOUS **solutions**

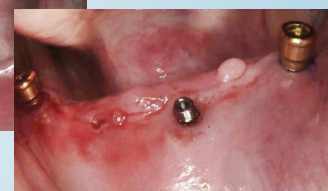
A LOCATOR® LIFE OFFERS PATIENT QUALITY OF LIFE WITH CLINICAL EXCELLENCE.

LOCATOR IMPLANT SYSTEM

The economical, ridge-specific full-arch implant solution that gives partially or fully edentulous patients simplicity and a quality of life they didn't think they could afford.



- **LOCATOR Implants are now removable and FIXED!**
- Only implant solution conveniently packaged with market-leading LOCATOR and designed specifically for overdenture therapy
- Available for all ridge sizes – easily and affordably accommodates narrow and standard ridges
- Ideal overdenture solution for patients with severe resorption and very narrow ridges
- Self-tapping for ease of insertion and increased primary stability
- Less invasive and delivers more predictable outcomes
- All-in-one package convenience – includes implant, LOCATOR abutment and processing pack
- Backed by a 10-year warranty



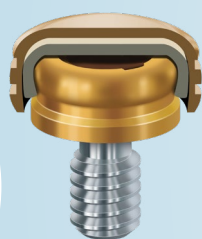
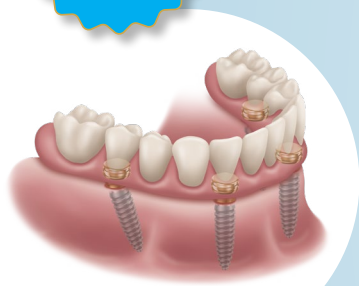
Dr. Kelly J. Olsen, DDS

LOCATOR Overdenture Implants provide great primary stability for my overdenture cases! Because of the aggressive threading and solid primary stability, simply follow the simple surgical protocol and the self-tapping threads will provide you good primary stability that in most type I and type II bone situations will allow you to immediately load the implants within the denture, which is a big win for you and the patient.

NEW!

LOCATOR **FIXED** ATTACHMENT SYSTEM

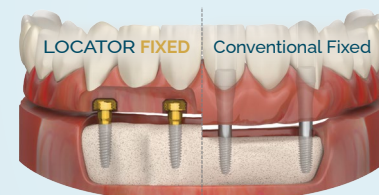
No New Abutment Required... Now use LOCATOR Abutments for **FIXED** Full-Arch



Introducing a NEW flexible and accessible **FIXED** full-arch solution

- LOCATOR Removable or **FIXED**... it's your choice.
- Utilize patients' existing LOCATOR or newly placed abutments to transition from a removable overdenture to a **FIXED**, full-arch solution.
- Offer staged treatment planning for your patients, removable today... **FIXED** tomorrow.
- Give your patients the life they had with their permanent teeth with an affordable, permanent implant-secured solution.

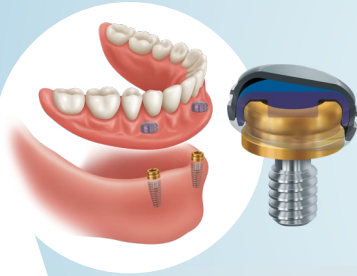
- A LOCATOR-proven alternative to the discomfort and pain associated with conventional dentures that feels more like permanent teeth.



Same Abutment,
Reduced Chairtime,
Less Bone Reduction...
LOCATOR **FIXED**

LOCATOR REMOVABLE ATTACHMENT SYSTEM

The self-aligning overdenture attachment innovation that revolutionized the industry and continues to be the market-leading attachment system.



- Clinically accepted and trusted globally with nearly 5 million patients treated
- Virtually compatible with all implant systems with over 280 connections
- Most requested, versatile and flexible overdenture attachment system available
- Offers customizable levels of retention, lowest vertical profile and exceptional durability
- Self-aligning technology allows for easy insertion and removal by patients

LOCATOR ANGLED

The new LOCATOR Angled Abutment offers a financially accessible solution that features 15 degrees of angle correction and makes it possible to treat more patients than ever in combination with the LOCATOR Removable or the LOCATOR FIXED systems. Using extended range or FIXED inserts, this solution offers the ability to be able to restore implants angled up to 35 degrees.



SCAN BODIES

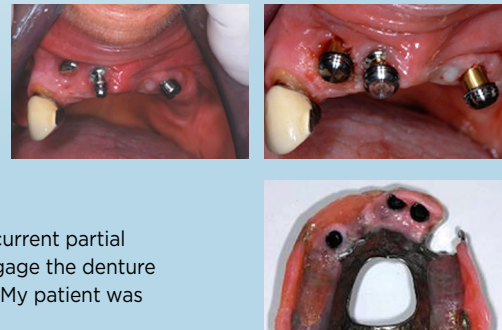
NEW LOCATOR Scan bodies are designed to enhance your digital workflow by automatically creating the space needed for denture attachment housings in a 3D printed or milled denture, saving valuable chair time and simplifying your workflow.



**Gregori M. Kurtzman, DDS,
MAGD, FPFA, FACD,
FADI, DICOI, DADIA, DIDIA**

82 year old patient presented, following loss of the right lateral incisor and complaint of partial denture instability. Divergent angulation of the implants was noted, complicating addition of attachments on the new implants and allowing patient insertion/removal of the current prosthesis.

LOCATOR abutments were placed onto all three implants and picked up in the current partial denture. The LOCATOR'S ability to allow divergent attachments to passively engage the denture provided a solution that would be difficult with other overdenture attachments. My patient was extremely pleased with the outcome!



Dr. Xavier Saab, DDS, MS

The use of the traditional LOCATOR abutment with the Fixed LOCATOR System, and simple removable prosthetic techniques will make full-arch implant rehabilitation a more predictable and economical way to reach many underserved patients. It will allow more general dentists to grow personally and professionally. And it will make the hygiene, maintenance, and repair appointments simpler and more efficient for the general dental practice.



LOCATOR R-Tx REMOVABLE ATTACHMENT SYSTEM

Refined, re-imagined and improved, LOCATOR R-Tx is a better, simpler and stronger overdenture attachment innovation.

- 25% greater wear resistance, with patented DuraTec[®] coating*
- Patented system innovations now accept up to 60° of implant divergence, eliminating the need for pre-angled abutments
- Pivoting technology enables easier denture alignment and seating for patients



NEW LIMITED-RANGE INSERTS allow a more secure fit for patients with 10° of implant divergence or less.



Dr. Michael David Scherer,
DMD, MS, FACP

LOCATOR R-Tx made short work of simplifying non-ideal implant positions for our patient.

Our patient was thrilled at the result since the pink anodized coatings and strong new inserts allow her to eat and smile again with confidence!



The ENCOMPASS 'INSIDE-THE-BOX' Advantage



Contents Include:
LOCATOR implants and abutments, LOCATOR Processing Packs, pilot surgical guide, Premium 3D Printed Absolute Forever Denture, treatment planning, CHAIRSIDE[®] finishing burs and attachment processing material, patient denture removal tool, plus cloud support.

Supported by LOCATOR[®] Abutments and Implants, ENCOMPASS is the complete 'overdentures-in-a-box' kit.

- Streamlines workflow, simplifies clinical actions, and expands your scope of treatable patients
- Reduces the number of possible visits by half, from 4-6 visits to as little as 2-3
- Eliminates clinical guesswork showing exactly where the implants get placed

- Partnership between ZEST Dental Solutions & Absolute Dental Services

ENCOMPASS eliminates the financial and physical barriers between edentulous patients and quality treatment, raising the standard of care for the whole of the profession.

*ENCOMPASS is only available in the US and may not be available to all customers.



Dr. David Little, DDS

The simplified, customized ENCOMPASS overdenture solution helps dental teams meet individual patient needs, increase efficiencies, reduce chairtime, and ensure cost predictability. ENCOMPASS enables you to give patients the best overdenture experience.

The streamlined workflow allows me to reduce chairtime and do more procedures, while offering patients an exceptional experience and accessible fees.

SEE HOW A **LOCATOR LIFE** IS A BETTER, MORE FULFILLING LIFE.

When patients are considering traditional dentures versus implant-retained overdentures, it is essential that they understand not only what they are getting, but what they might be giving up — freedom from their dentures.

TRADITIONAL DENTURES

- Requires ongoing purchase of denture adhesive
- Further bone loss can change fit over time
- Can cause loss or interference with taste
- Less expensive
- Confidence to maintain relationships, hobbies and social life

VS

A LOCATOR LIFE

- Removable and FIXED full-arch solutions
- Better fit and more confident retention
- Helps deter bone loss in jaw
- Looks and feels more like natural teeth
- Enables enjoyment of virtually any food
- Superior support enhances and better maintains quality of life
- Enables an ongoing relationship with the dental professional
- Can be cost-effective

From Removable and FIXED, a LOCATOR Life... offers patients unmatched performance and aesthetics that allow them greater satisfaction and confidence in their smiles and their lives.



HYGIENE AND MAINTENANCE

AN EASIER LIFE FOR PATIENTS AND PRACTICES

More than just a full-arch solution, A LOCATOR Life is renewed confidence for patients and a sense of greater fulfillment for practices.

PATIENTS ARE MOTIVATED TO MAINTAIN GOOD HYGIENE FOR:

- Greater comfort
- Better retention
- More positive, long-term outcomes
- Faster treatment of any issues

DENTAL PROFESSIONALS BENEFIT FROM:

- Greater patient satisfaction and engagement
- Ongoing patient relationships
- Earlier diagnosis and treatment of problems
- Reduced scheduled emergencies
- Easier conversations regarding future treatment options



OUR PROMISE

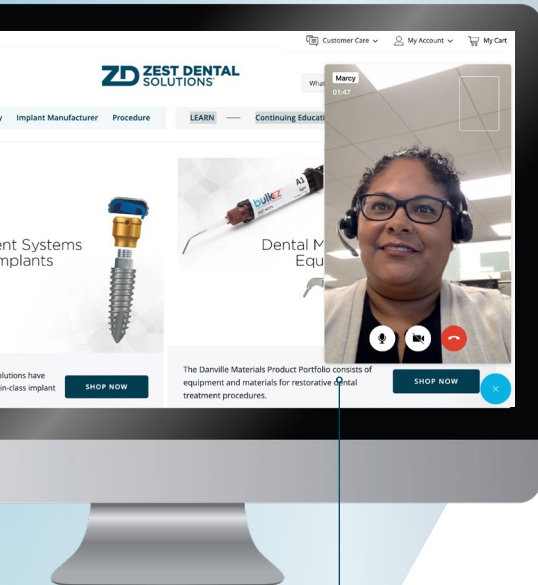
ZEST LIVE!™ IS A PART OF A LOCATOR LIFE

Zest LOCATOR systems come backed by a variety of Zest LIVE! in-clinic support options that allow you to get the answers and information you want, in the way that's most convenient for your busy schedule.

- **LIVE! PRODUCT & ACCOUNT SUPPORT** - Get answers on product features and account status face-to-face from one of our specialists
- **LIVE! TECHNICAL SUPPORT** - Talk to a tech expert and get live insight on the go, even from your treatment room
- **LIVE! EDUCATION SUPPORT** - Expand your knowledge base with a list of in-person and virtual training resources on Zest LOCATOR products
- **LIVE! SALES SUPPORT** - Arrange a visit from a Zest specialist for in-clinic demos, training and support

Zest LIVE! in-clinic support, helps your patients and practice live A LOCATOR Life of more convenience, quality and confidence.

**For more information, call 800-262-2310
or visit zestdent.com today.**



EASILY CONTACT our clinical support specialists and technical services team members online for live video support.



800.262.2310 • WWW.ZESTDENT.COM



*Data on file - Zest Anchors, LLC

©2025 ZEST Anchors LLC. All rights reserved. LOCATOR, ZEST and Zest Dental Solutions are registered trademarks of ZEST IP Holdings, LLC. ERA is a registered trademark of Sterngold Dental, LLC.

L9155 REV E 05/2025